
Professional Development

Elevate Your Career

In the fast-paced and ever-changing world of entrepreneurship, women entrepreneurs face unique challenges and obstacles on their journey to success. While their determination and passion drive them forward, the importance of a professional life coach cannot be overstated.

A life coach serves as a guiding light, a confidant, and a catalyst for personal and professional growth, empowering women entrepreneurs to thrive in the face of adversity.

Invest in Your Professional Growth

One of the key reasons to invest in a professional life coach as an entrepreneur is by providing a safe space for you to uncover your true potential and align your goals and values. Through personalized strategies, actionable insights, you will be equipped with the tools to navigate the complexities of entrepreneurship with confidence.

Moreover, I can assist you combat your self-doubt. Being an entrepreneur can be a rollercoaster ride, filled with highs and lows. As women entrepreneurs we often face unique societal and cultural expectations, which can amplify feelings of imposter syndrome and self-doubt. I will be your steadfast supporter, cheerleader helping to silence self-limiting beliefs.

Personal Development

Why Get A Life Coach?

Why should you have a life coach? Well, because we're like a GPS for your dreams - they'll help you navigate through the detours, recalibrate when you're off track, and cheer you on all the way to your destination. Plus, unlike Siri, they won't judge you for taking a wrong turn or asking for directions!

Empower Your Journey

Unlock your full potential and achieve the life you desire with Inertia Justice Enterprises Inc. Our team of experienced personal and professional life coaches are here to guide you towards success and fulfillment.

Personal Growth & Transformation

Discover the power within you to overcome obstacles and create positive change in your personal life. Our life coaches provide support and guidance as you explore your goals, identify your strengths, and develop effective strategies to reach your full potential.

- Develop your self-confidence well as boost your self-esteem
- Enhance interpersonal relationships and communication skills.
- Manage stress and achieve work-life balance
- Cultivate healthy habits and improve overall well-being.

Inertia Justice Enterprises Inc.

Personal and Professional Life Coach Services



Tameka White

Life Coach

8530 Tidwell Rd.
Houston, Texas 77072

Tameka White

Life Coach

EDUCATION & CAREER

Tameka White has more than 20 years of varied work experience and extensive about of education. To her education is an intrigue part to living a comfortable life. Practical knowledge paired with scholastics is an undeniable asset in and society. Tameka White knows this fact all too well. She was the youngest in her graduating class with a respectable 3.7 GPA (on a 4.0 scale). By the time she graduated she had a cosmetology license and was employing it to support herself, as pressures of home life resulted in her early launch at 17.

Adversity was unfortunately a familiar friend for Tameka, becoming a single mother at the age of 21. It didn't stop her from completing college three times. Graduating the first time with an Associates degree in Business Administration, which she leveraged becoming the youngest regional manger for the southwestern regional Supercuts franchise in Atlanta Georgia.

Wanting to create a more stable schedule for her daughter she switched careers and returned to school for her Bachelor degree in communication with a public relations concentration earning a 3.5 GPA. Tameka quickly climbed the corporate ladder beginning as a an analyst with Shell Oil, then project coordinator Seimens Wind, and then Enbridge PMP certified project manager.

Serving simultaneously as the Chief Financial Officer of Gemini Business Solutions Inc. and now a single mother of two, Tameka returned to school receive a Masters degree in sociology with honors and a 4.0 GPA. Shortly after she was certified as life coach.

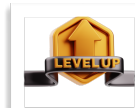
PHILOSOPHY

Tameka's philosophy is "prayers though everything depends on God and work as thought everything depends on you." And "While it is not a crime to be ignorant, it is very expensive, so adopt an unquenchable thirst for knowledge."

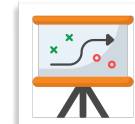
COACHING

Coaching is the end-game. When asked Ms. White says that "All the experiences, the hardship and triumphs, I've encountered is a part of my assignment. This is what I was made for and tested to do. I learned all the hard lessons and gained the knowledge to share it with my tribe. By so doing, I lift the above me to continue the advancement of humanity. It's my assignment."

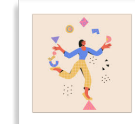
COACHING PLANS



Level Up is a guide to help you embark a transformative journey of self-discovery and growth.



Strategic Plan is a personalized roadmap and identify your goals, overcome obstacles, and reach your full potential.



The "Balancing Act" a life coaching plan tailored approach to find harmony and fulfillment in all aspects of your life.

CONSULTING

Her view on consulting, "It's just another avenue to spread to the wealth of her knowledge and experiences with the next generation."



Each client is carefully selected based on their willingness to partner, listen, and execute. Partnering is a collaboration of information and actions. It is imperative that the client is able to view this as a partnership, no competition, no boss, no subordinate the outcome is the product of a collaboration depending heavily of the ability for both sides to listen and execute.

COLLABORATIONS

The best partners for Tameka are: business owners and professionals looking to streamline and or create processes, parent professionals looking to establish work/life balance, and parents and educators and administrators of behaviorally challenged children.

TESTIMONIES

"I highly recommend Inertia Justice Enterprises Inc., and Tameka White to anyone looking for a personal and professional life coach. Her expertise and personalized approach have made a significant difference in my life." - Janice D.

"Working with Tameka White has truly been a life-changing experience. Her guidance and support has helped me overcome obstacles and achieve many of my personal and key professional success." - Sarah M.